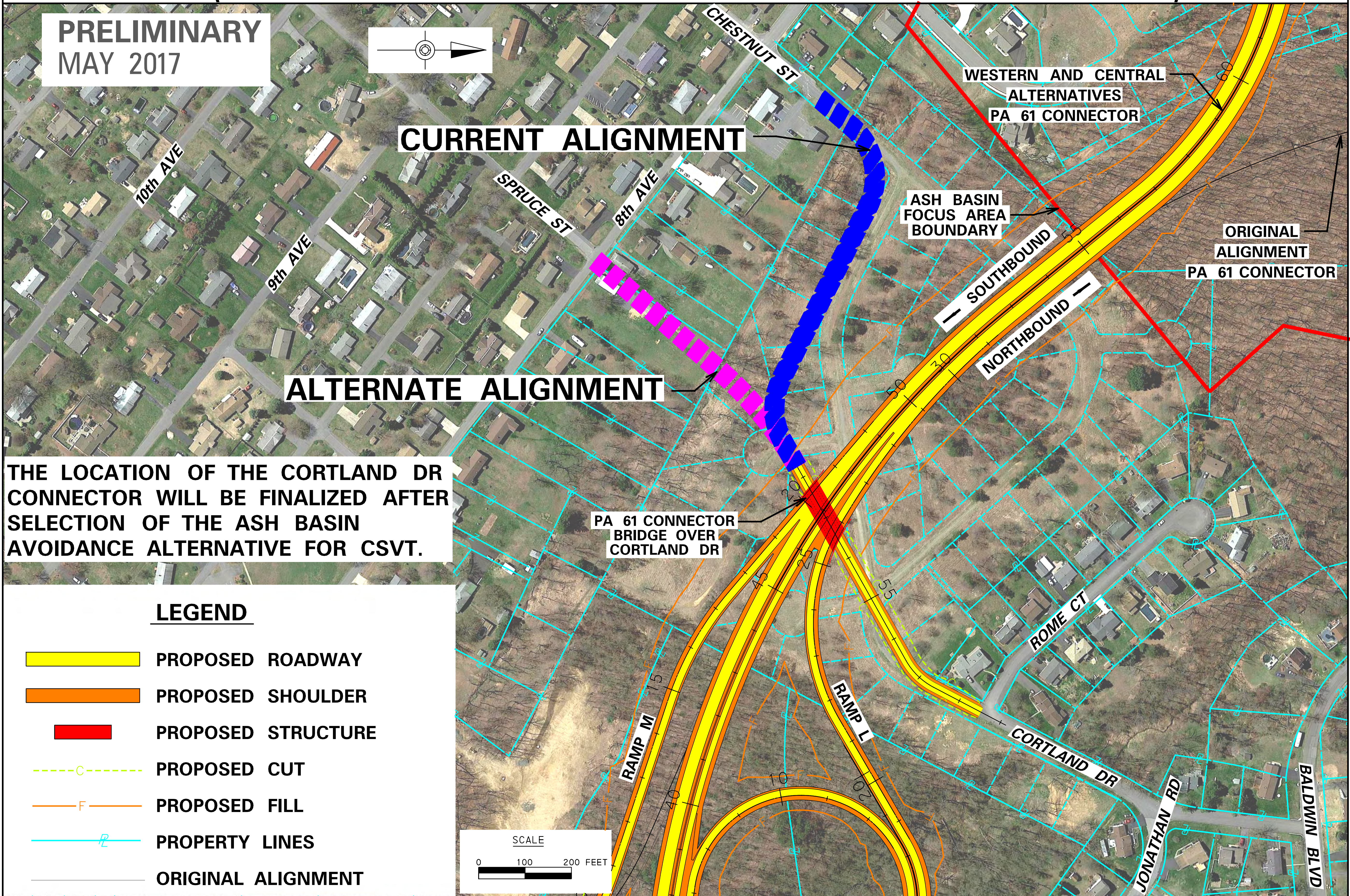


# CORTLAND DRIVE CONNECTOR FOR CSVT WESTERN AND CENTRAL ALTERNATIVES

- - CURRENT ALIGNMENT CONNECTS TO CHESTNUT ST. (APPROVED IN FEIS)
- - ALTERNATE ALIGNMENT CONNECTS TO SPRUCE ST.  
(BEING CONSIDERED AT REQUEST OF SHAMOKIN DAM BOROUGH)

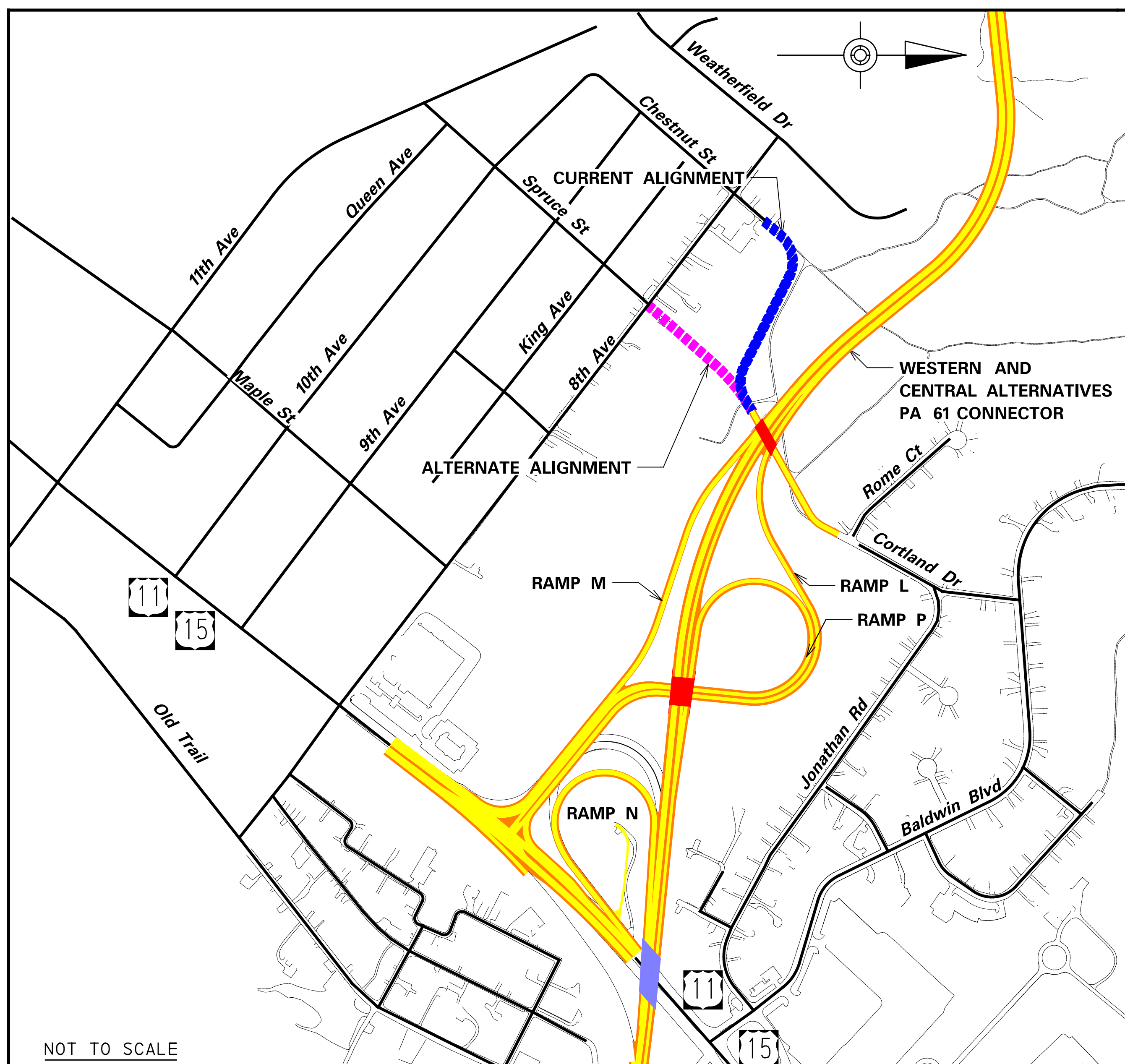
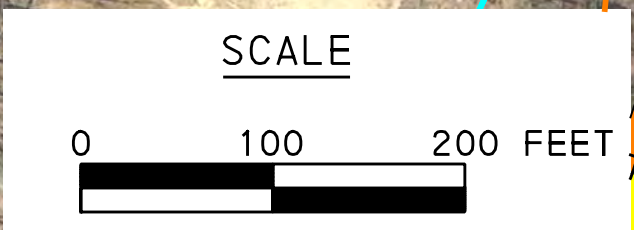
PRELIMINARY  
MAY 2017



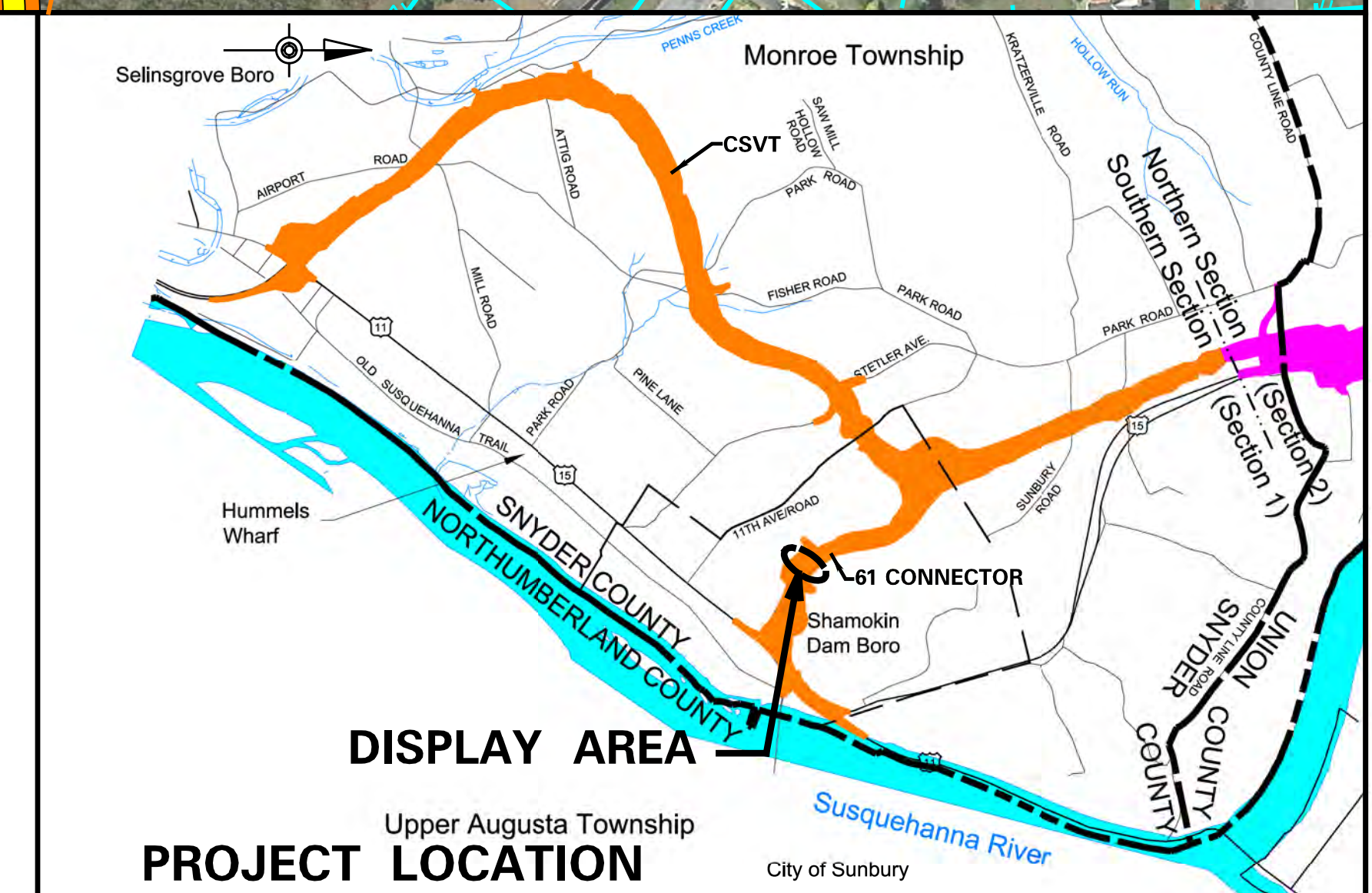
THE LOCATION OF THE CORTLAND DR CONNECTOR WILL BE FINALIZED AFTER SELECTION OF THE ASH BASIN AVOIDANCE ALTERNATIVE FOR CSVT.

**LEGEND**

- PROPOSED ROADWAY
- PROPOSED SHOULDER
- PROPOSED STRUCTURE
- PROPOSED CUT
- PROPOSED FILL
- PROPERTY LINES
- ORIGINAL ALIGNMENT



SHAMOKIN DAM BOROUGH LOCATION MAP



PRELIMINARY  
MAY 2017

**CORTLAND DRIVE  
CONNECTOR**  
S.R. 15, Section 088  
Central Susquehanna Valley  
Transportation Project  
Southern Section  
Snyder County

